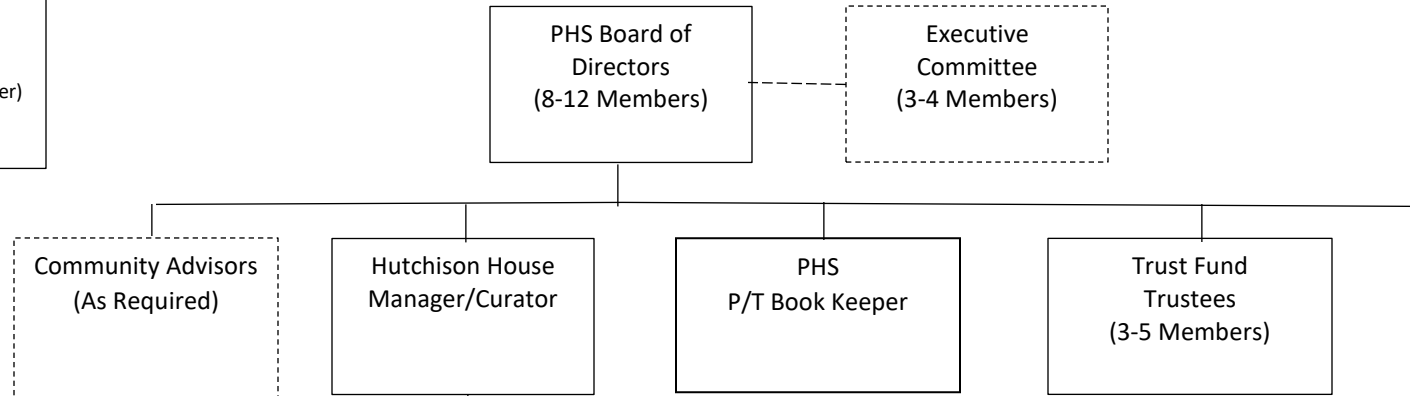


**PETERBOROUGH HISTORICAL SOCIETY  
ORGANIZATION CHART**

- Board of Directors**
- President
  - Vice President
  - Treasurer
  - Secretary (Combine with Treasurer)
  - Directors (4-7)
  - Curator (Non-Voting Member)



- Hutchison House Committees & Working Teams**
- Events & Programs\*
  - Volunteer\*  
(Cooking, Teas, Guiding, Costumes, Crafts, etc.)
  - Property and Restoration\*
  - Garden\*
  - Collection and Acquisition\*
  - Friends of Hutchison House \*

- Hutchison House Operations Committee**
- Chairperson
  - Curator/Manager
  - Committee Members (5-7),  
Property, Garden, Collection,  
Volunteers

1) \* = Existing Committee  
2) Committees & Working Teams are volunteer based supported by the Curators, HHOC and Board

- PHS Committees**
- Finance/Administration  
(Budgets, Sponsorships, Fundraising, Memberships)
  - Communications  
(Publications, Bulletins, Mailings, Publicity, Web Site)
  - Special Events, Lectures and Social
  - Human Resources
  - Plaques
  - Library and Archives
  - Awards